



GHANA STATISTICAL SERVICE (GSS)
Statistics for Development and Progress

Statistical Bulletin

(PRODUCER PRICE INDEX PPI)
August, 2020

Ghana Statistical Service (GSS)

Statistical Bulletin

PRODUCER PRICE INDEX (PPI)

August, 2020

Date: September 16, 2020

Producer Price Index (PPI)
AUGUST 2020

CONTENTS

| | |
|---|----|
| HIGHLIGHTS FOR AUGUST 2020 | 2 |
| Table 1: Producer Price Index for August 2019 - August 2020 | 4 |
| Table 2: Producer Price Index (Sep.2006=100) by sectors for August 2019 - August 2020 | 5 |
| Table 3: Producer Price Index: Yearly Change Rates by Sector for August 2019 - August 2020 (%) | 6 |
| Table 4: Producer Price Index: Monthly Change Rates by Sector for August 2019 - August 2020 (%) | 7 |
| Table 5: Mining And Quarrying: Producer Price Index (Sept 2006=100) August 2019 - August 2020 | 8 |
| Table 6: Mining and Quarrying: Yearly Change Rates for August 2019 - August 2020 (%) | 9 |
| Table 7: Mining and Quarrying: Monthly Change Rates for August 2019 - August 2020 (%) | 10 |
| Table 8: Manufacturing Producer Price Index (Sept 2006=100) for August 2019 - August 2020 | 11 |
| Table 9: Manufacturing: Yearly Change Rates for August 2019 - August 2020 (%) | 17 |
| Table 10: Manufacturing: Monthly Change Rates for August 2019 - August 2020 (%) | 23 |
| Table 11: Utilities: Producer Price Index (Sept 2006=100) for August 2019 - August 2020 | 28 |
| Table 12: Utilities: Yearly Change Rates for August 2019 - August 2020 (%) | 29 |
| Table 13: Utilities: Monthly Change Rates for August 2019 - August 2020 (%) | 30 |

HIGHLIGHTS FOR AUGUST 2020

Producer Price Inflation Rate in August 2020 is 9.0%

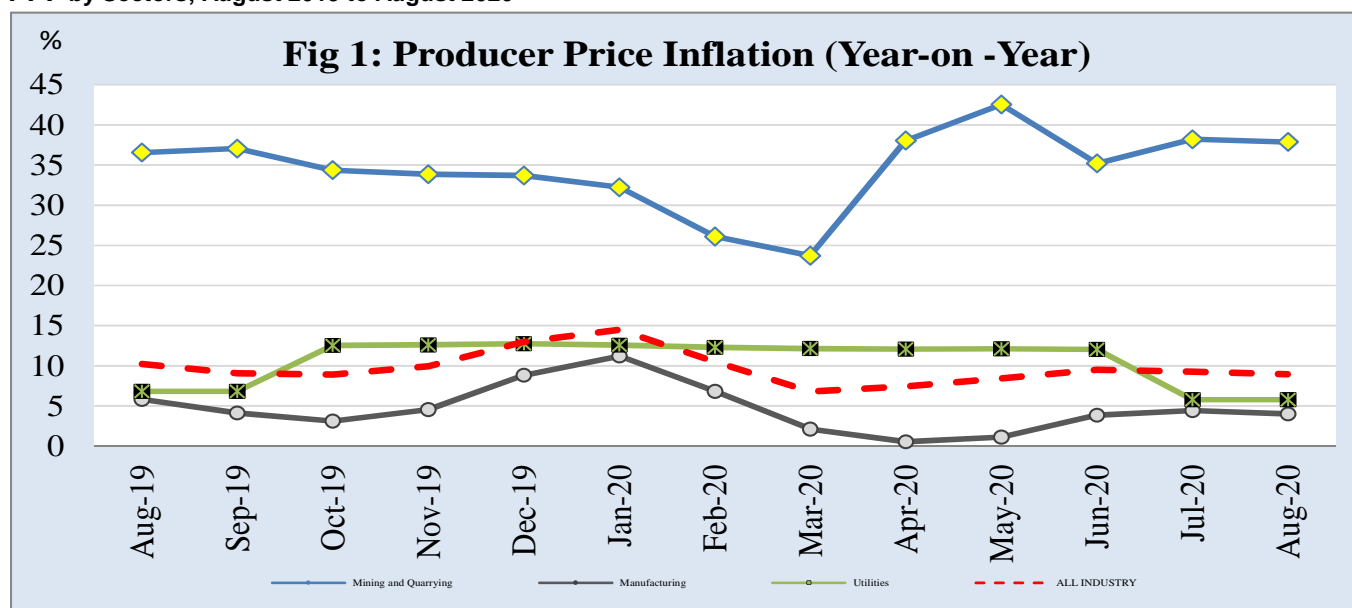
The Producer Price Index (PPI) measures the average change over time in the prices received by domestic producers for the production of their goods and services. The PPI for Ghana reports the producer price indices with reference to September 2006, the base period. This release shows the annual (year-on-year) and monthly producer inflation rates for all industry and three major sub-sectors of industry (Mining and Quarrying, Manufacturing, and Utilities) for the last twelve months. The figures for August 2020 are provisional and are subject to revision when additional data become available. All other indicators are final.

The Producer Price Inflation rate for August 2020 was 9.0 percent. This rate indicates that between August 2019 and August 2020 (year-on-year), the PPI increased by 9.0 percent. This rate represents a 0.3 percentage point decrease in producer inflation relative to the rate recorded in July 2020 (9.3%). The month-on-month change in producer price index between July 2020 and August 2020 was 0.9 percent.

The producer price inflation in the Mining and Quarrying sub-sector decreased by 0.3 percentage points over the July 2020 rate of 38.2 percent to record 37.9 percent in August 2020. The producer inflation for Manufacturing, which constitutes more than two-thirds of the total industry, decreased by 0.4 percentage points to record 4.0 percent. The utility sub-sector recorded the same inflation rate of 5.8 percent as the rate for July 2020.

During August 2020, seven out of the sixteen major groups in the manufacturing sub-sector recorded inflation rates higher than the sector average of 4.0 percent. Manufacture of rubber and plastic products recorded the highest inflation rate of 16.5 percent, while the Manufacture of coke, refined petroleum products, and nuclear fuel recorded the least inflation rate of -5.4 percent.

PPI by Sectors; August 2019 to August 2020



Manufacture of coke, refined petroleum products etc: Annual rate was -4.0 percent for July 2020, as compare to -5.4 percent in August 2020.

Manufacture of other non-metallic mineral product: Annual rate was 11.0 percent for July 2020 and remained unchanged for August 2020.

Manufacture of food products and beverages: Annual rate was 9.1 percent in August 2020, as compared to 9.0 percent in July 2020.

Electricity and Water Supply: the inflation rate was 5.8 percent in July 2020 and remained unchanged in August 2020.

More detailed time series data is posted on the GSS website [www.statsghana.gov.gh].

The next release date is 21st October 2020

Table 1: Producer Price Index for August 2019 - August 2020

| Year / Month | Index level | Monthly | Yearly |
|--------------|---------------|-----------------|--------|
| | Sept 2006=100 | Change Rate (%) | |
| August-19 | 658.1 | 1.2 | 10.2 |
| September-19 | 655.0 | -0.5 | 9.1 |
| October-19 | 664.5 | 1.5 | 8.9 |
| November-19 | 666.8 | 0.3 | 9.9 |
| December-19 | 677.1 | 1.5 | 13.0 |
| January-20 | 687.7 | 1.6 | 14.5 |
| February-20 | 677.3 | -1.5 | 10.5 |
| March-20 | 663.1 | -2.1 | 6.8 |
| April-20 | 673.4 | 1.5 | 7.4 |
| May-20 | 681.2 | 1.2 | 8.4 |
| June-20 | 699.0 | 2.6 | 9.5 |
| July-20 | 710.6 | 1.7 | 9.3 |
| August-20 | p 717.0 | p 0.9 | p 9.0 |

p: provisional

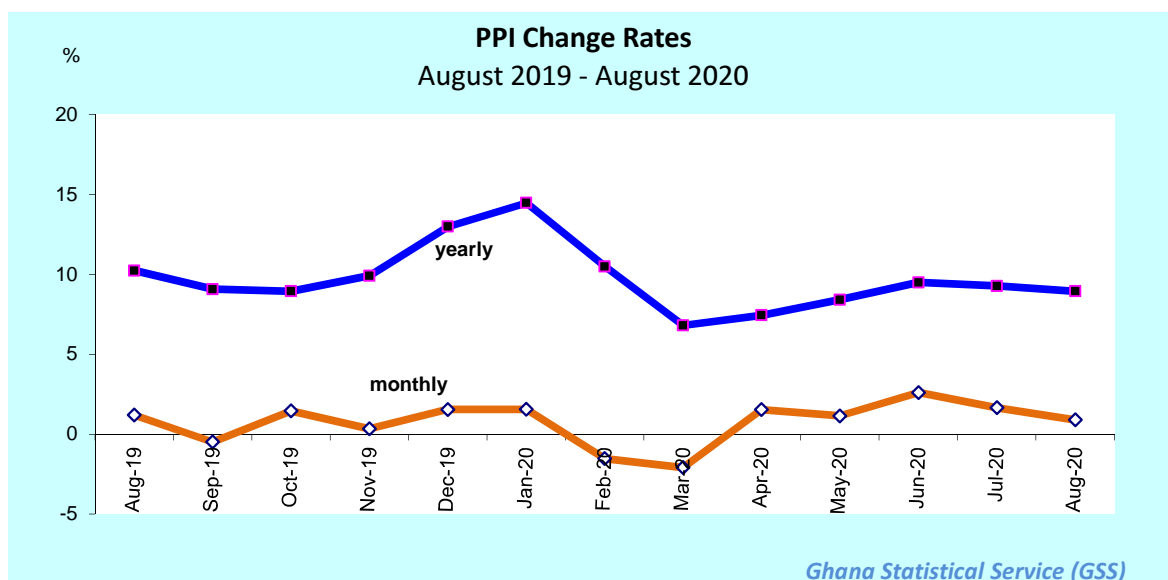


Table 2: Producer Price Index (Sep.2006=100) by sectors for August 2019 - August 2020

| Year / Month | Mining and Quarrying | Manufacturing | Utilities | ALL INDUSTRY |
|----------------|----------------------|---------------|-----------|--------------|
| <i>ISIC</i> | <i>C</i> | <i>D</i> | <i>E</i> | <i>C+D+E</i> |
| <i>weight</i> | 13.97 | 69.75 | 16.28 | 100.00 |
| August-2019 | 1,537.0 | 511.5 | 849.7 | 658.1 |
| September-2019 | 1,565.9 | 505.7 | 850.0 | 655.0 |
| October-2019 | 1,551.8 | 511.2 | 896.0 | 664.5 |
| November-2019 | 1,552.0 | 513.7 | 896.5 | 666.8 |
| December-2019 | 1,595.7 | 521.9 | 897.7 | 677.1 |
| January-2020 | 1,649.9 | 530.0 | 897.2 | 687.7 |
| February-2020 | 1,646.1 | 518.7 | 895.9 | 677.3 |
| March-2020 | 1,641.1 | 503.2 | 896.2 | 663.1 |
| April-2020 | 1,786.5 | 504.7 | 897.6 | 673.4 |
| May-2020 | 1,847.3 | 509.3 | 898.3 | 681.2 |
| June-2020 | 1,880.0 | 526.7 | 898.6 | 699.0 |
| July-2020 | 2,014.6 | 531.2 | 898.8 | 710.6 |
| August-2020 | p 2,119.0 | p 532.1 | p 898.9 | p 717.0 |

p: provisional

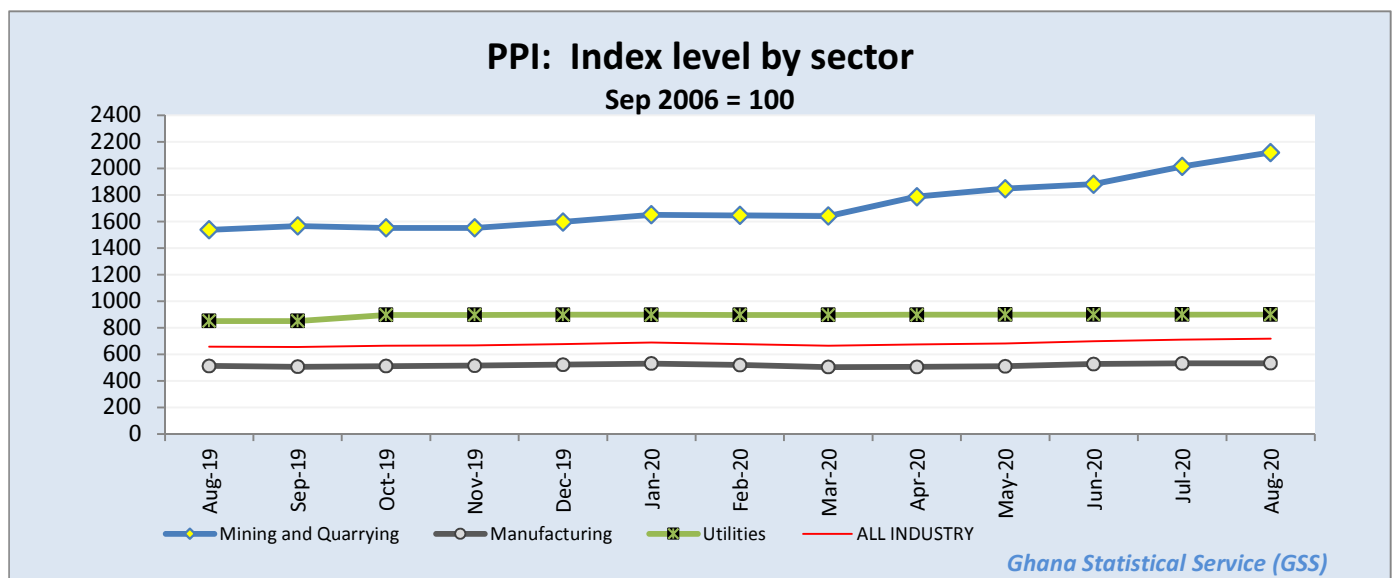


Table 3: Producer Price Index: Yearly Change Rates by Sector for August 2019 - August 2020 (%)

| Year / Month | Mining and Quarrying | Manufacturing | Utilities | ALL INDUSTRY |
|----------------|----------------------|---------------|-----------|--------------|
| | <i>C</i> | <i>D</i> | <i>E</i> | <i>C+D+E</i> |
| August-2019 | 36.5 | 5.8 | 6.8 | 10.2 |
| September-2019 | 37.1 | 4.1 | 6.8 | 9.1 |
| October-2019 | 34.4 | 3.1 | 12.6 | 8.9 |
| November-2019 | 33.9 | 4.5 | 12.6 | 9.9 |
| December-2019 | 33.7 | 8.8 | 12.7 | 13.0 |
| January-2020 | 32.2 | 11.2 | 12.6 | 14.5 |
| February-2020 | 26.1 | 6.8 | 12.3 | 10.5 |
| March-2020 | 23.7 | 2.1 | 12.2 | 6.8 |
| April-2020 | 38.0 | 0.5 | 12.1 | 7.4 |
| May-2020 | 42.5 | 1.1 | 12.1 | 8.4 |
| June-2020 | 35.2 | 3.8 | 12.0 | 9.5 |
| July-2020 | 38.2 | 4.4 | 5.8 | 9.3 |
| August-2020 | p 37.9 | p 4.0 | p 5.8 | p 9.0 |

p: provisional

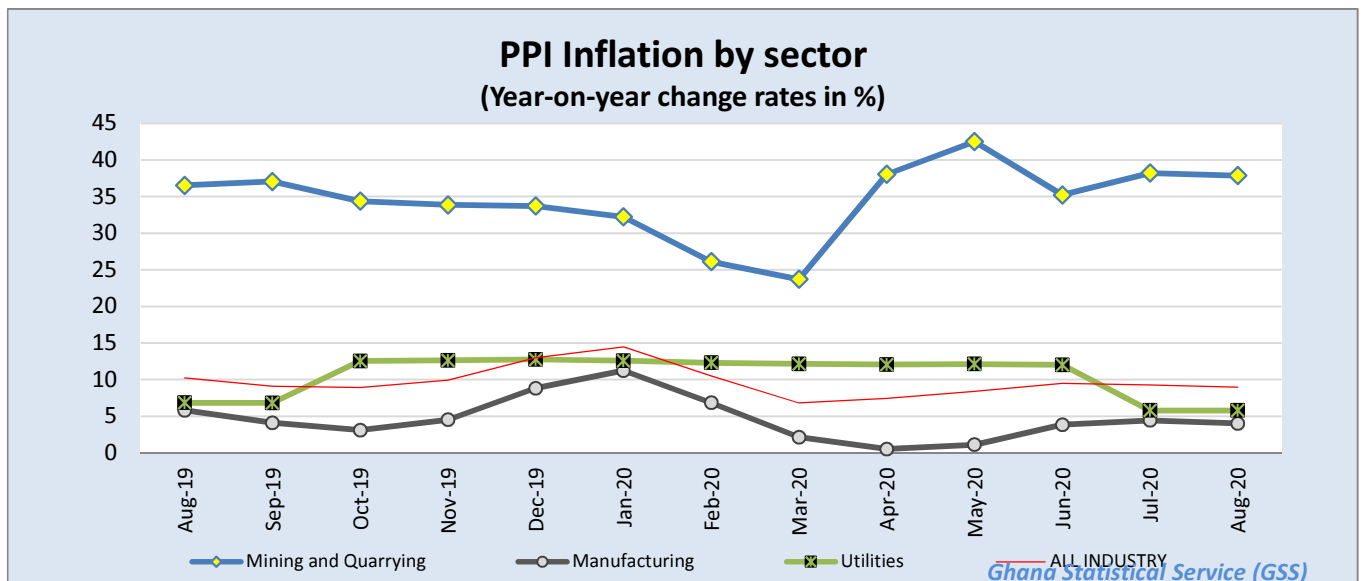


Table 4: Producer Price Index: Monthly Change Rates by Sector for August 2019 - August 2020 (%)

| Year / Month | Mining and Quarrying | Manufacturing | Utilities | ALL INDUSTRY |
|----------------|----------------------|---------------|-----------|--------------|
| <i>ISIC</i> | <i>C</i> | <i>D</i> | <i>E</i> | <i>C+D+E</i> |
| <i>weight</i> | 13.97 | 69.75 | 16.28 | 100.00 |
| August-2019 | 5.5 | 0.6 | 0.0 | 1.2 |
| September-2019 | 1.9 | -1.1 | 0.0 | -0.5 |
| October-2019 | -0.9 | 1.1 | 5.4 | 1.5 |
| November-2019 | 0.0 | 0.5 | 0.1 | 0.3 |
| December-2019 | 2.8 | 1.6 | 0.1 | 1.5 |
| January-2020 | 3.4 | 1.5 | -0.1 | 1.6 |
| February-2020 | -0.2 | -2.1 | -0.1 | -1.5 |
| March-2020 | -0.3 | -3.0 | 0.0 | -2.1 |
| April-2020 | 8.9 | 0.3 | 0.1 | 1.5 |
| May-2020 | 3.4 | 0.9 | 0.1 | 1.2 |
| June-2020 | 1.8 | 3.4 | 0.0 | 2.6 |
| July-2020 | 7.2 | 0.8 | 0.0 | 1.7 |
| August-2020 | p 5.2 | p 0.2 | p 0.0 | p 0.9 |

p: provisional

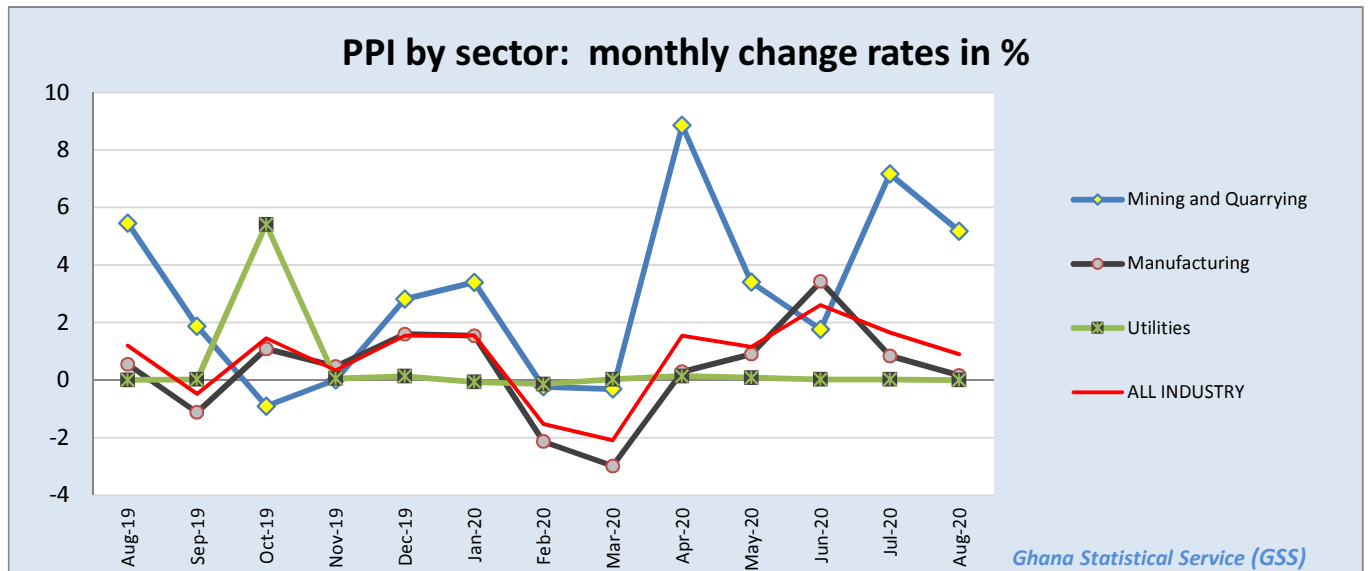


Table 5: Mining And Quarrying: Producer Price Index (Sept 2006=100) August 2019 - August 2020

| Year / Month | Mining and Quarrying | Mining of metal ores | Mining of non-ferrous metal ores | Other mining and quarrying | Quarrying of stone, sand & clay | Mining and quarrying n.e.c. |
|----------------|----------------------|----------------------|----------------------------------|----------------------------|---------------------------------|-----------------------------|
| ISIC | C | C13 | C132 | C14 | C141 | C142 |
| August-2019 | 1537.0 | 1659.8 | 1659.8 | 226.9 | 183.8 | 519.3 |
| September-2019 | 1565.9 | 1692.2 | 1692.2 | 226.9 | 183.8 | 519.3 |
| October-2019 | 1551.8 | 1676.4 | 1676.4 | 226.9 | 183.8 | 519.3 |
| November-2019 | 1552.0 | 1676.4 | 1676.4 | 227.5 | 184.4 | 519.3 |
| December-2019 | 1595.7 | 1725.5 | 1725.5 | 227.5 | 184.4 | 519.3 |
| January-2020 | 1649.9 | 1786.6 | 1786.6 | 227.5 | 184.4 | 519.3 |
| February-2020 | 1646.1 | 1782.3 | 1782.3 | 227.5 | 184.4 | 519.3 |
| March-2020 | 1641.1 | 1776.6 | 1776.6 | 227.5 | 184.4 | 519.3 |
| April-2020 | 1786.5 | 1940.6 | 1940.6 | 227.5 | 184.4 | 519.3 |
| May-2020 | 1847.3 | 2009.4 | 2009.4 | 227.5 | 184.4 | 519.3 |
| June-2020 | 1880.0 | 2046.4 | 2046.4 | 227.5 | 184.4 | 519.3 |
| July-2020 | 2014.6 | 2199.0 | 2199.0 | 227.5 | 184.4 | 519.3 |
| August-2020 | p 2119.0 | p 2317.7 | p 2317.7 | p 227.5 | p 184.4 | p 519.3 |

p: provisional

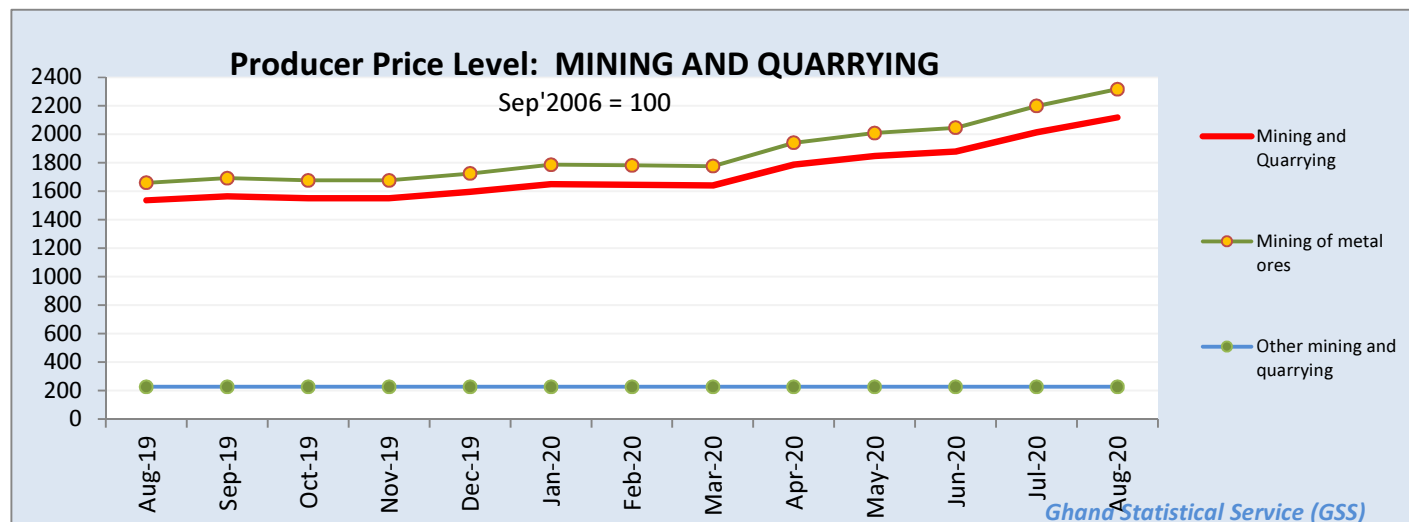


Table 6: Mining and Quarrying: Yearly Change Rates for August 2019 - August 2020 (%)

| Year / Month | Mining and Quarrying | Mining of metal ores | Mining of non-ferrous metal ores | Other mining and quarrying | Quarrying of stone, sand & clay | Mining and quarrying n.e.c. |
|----------------|----------------------|----------------------|----------------------------------|----------------------------|---------------------------------|-----------------------------|
| ISIC | C | C13 | C132 | C14 | C141 | C142 |
| August-2019 | 36.5 | 38.2 | 38.2 | 1.0 | 0.0 | 4.9 |
| September-2019 | 37.1 | 38.8 | 38.8 | 1.0 | 0.0 | 4.9 |
| October-2019 | 34.4 | 35.9 | 35.9 | 1.0 | 0.0 | 4.9 |
| November-2019 | 33.9 | 35.4 | 35.4 | 1.2 | 0.3 | 4.9 |
| December-2019 | 33.7 | 35.3 | 35.3 | 0.2 | 0.3 | 0.0 |
| January-2020 | 32.2 | 33.7 | 33.7 | 0.2 | 0.3 | 0.0 |
| February-2020 | 26.1 | 27.3 | 27.3 | 0.2 | 0.3 | 0.0 |
| March-2020 | 23.7 | 24.8 | 24.8 | 0.2 | 0.3 | 0.0 |
| April-2020 | 38.0 | 39.8 | 39.8 | 0.2 | 0.3 | 0.0 |
| May-2020 | 42.5 | 44.5 | 44.5 | 0.2 | 0.3 | 0.0 |
| June-2020 | 35.2 | 36.9 | 36.9 | 0.2 | 0.3 | 0.0 |
| July-2020 | 38.2 | 40.0 | 40.0 | 0.2 | 0.3 | 0.0 |
| August-2020 | p 37.9 | p 39.6 | p 39.6 | p 0.2 | p 0.3 | p 0.0 |

p: provisional

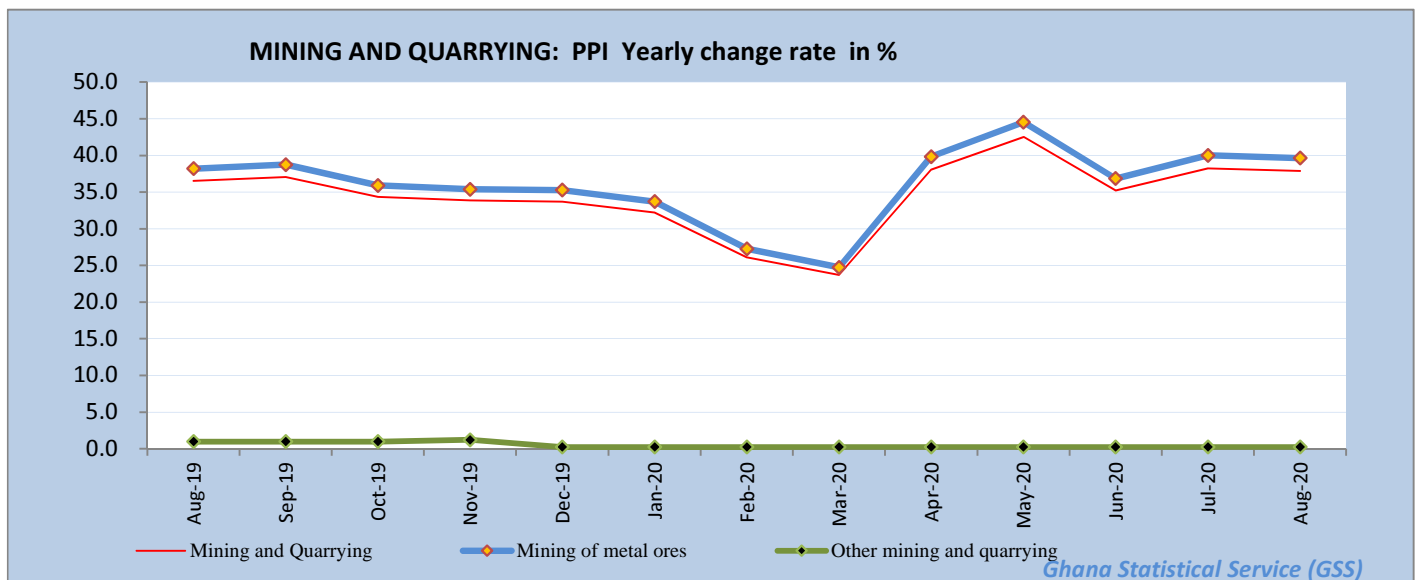


Table 7: Mining and Quarrying: Monthly Change Rates for August 2019 - August 2020 (%)

| Year / Month | Mining and Quarrying | Mining of metal ores | Mining of non-ferrous metal ores | Other mining and quarrying | Quarrying of stone, sand & clay | Mining and quarrying n.e.c. |
|----------------|----------------------|----------------------|----------------------------------|----------------------------|---------------------------------|-----------------------------|
| ISIC | C | C13 | C132 | C14 | C141 | C142 |
| August-2019 | 5.5 | 5.7 | 5.7 | 0.0 | 0.0 | 0.0 |
| September-2019 | 1.9 | 2.0 | 2.0 | 0.0 | 0.0 | 0.0 |
| October-2019 | -0.9 | -0.9 | -0.9 | 0.0 | 0.0 | 0.0 |
| November-2019 | 0.0 | 0.0 | 0.0 | 0.2 | 0.3 | 0.0 |
| December-2019 | 2.8 | 2.9 | 2.9 | 0.0 | 0.0 | 0.0 |
| January-2020 | 3.4 | 3.5 | 3.5 | 0.0 | 0.0 | 0.0 |
| February-2020 | -0.2 | -0.2 | -0.2 | 0.0 | 0.0 | 0.0 |
| March-2020 | -0.3 | -0.3 | -0.3 | 0.0 | 0.0 | 0.0 |
| April-2020 | 8.9 | 9.2 | 9.2 | 0.0 | 0.0 | 0.0 |
| May-2020 | 3.4 | 3.5 | 3.5 | 0.0 | 0.0 | 0.0 |
| June-2020 | 1.8 | 1.8 | 1.8 | 0.0 | 0.0 | 0.0 |
| July-2020 | 7.2 | 7.5 | 7.5 | 0.0 | 0.0 | 0.0 |
| August-2020 | p 5.2 | p 5.4 | p 5.4 | p 0.0 | p 0.0 | p 0.0 |

p: provisional

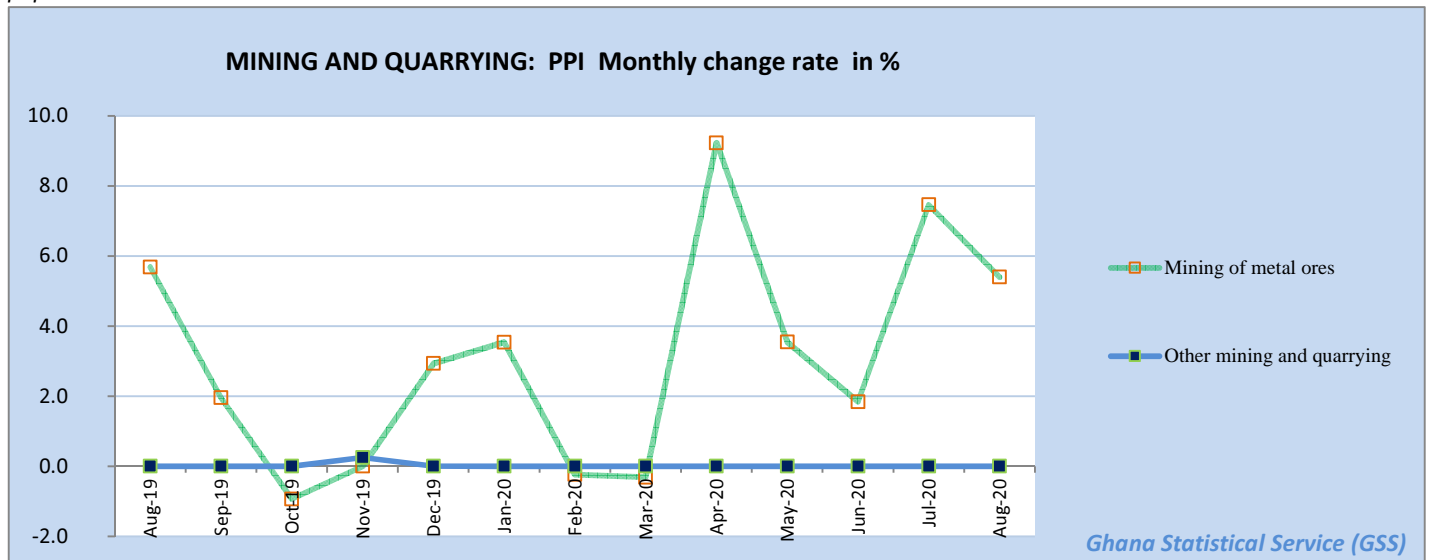


Table 8: Manufacturing Producer Price Index (Sept 2006=100) for August 2019 - August 2020

| Year / Month | Manufacturing | Manufacture of food products and beverages | Production, processing, preservation of meat, fish, fruit, vegetables, oils and fats | Manufacture of dairy products | Manufacture of grain mill products, starch products, and prepared animal feeds | Manufacture of other food products | Manufacture of beverages | Manufacture of textiles | Spinning, weaving and finishing of textiles |
|----------------|----------------------|---|--|-------------------------------|--|------------------------------------|--------------------------|--------------------------------|---|
| <i>ISIC</i> | D | D15 | <i>D151</i> | <i>D152</i> | <i>D153</i> | <i>D154</i> | <i>D155</i> | D17 | <i>D171</i> |
| <i>weight</i> | 100 | 25.64 | 4.60 | 4.31 | 4.66 | 4.80 | 7.27 | 4.27 | 4.28 |
| August-2019 | 511.5 | 467.8 | 653.7 | 387.6 | 578.1 | 594.7 | 375.2 | 617.4 | 617.4 |
| September-2019 | 505.7 | 469.4 | 667.7 | 387.6 | 578.1 | 595.7 | 375.2 | 617.3 | 617.3 |
| October-2019 | 511.2 | 470.0 | 671.7 | 387.6 | 578.1 | 596.8 | 375.2 | 617.5 | 617.5 |
| November-2019 | 513.7 | 474.5 | 711.1 | 387.6 | 580.3 | 598.8 | 375.2 | 618.0 | 618.0 |
| December-2019 | 521.9 | 505.9 | 766.4 | 460.8 | 580.3 | 609.1 | 375.2 | 619.2 | 619.2 |
| January-2020 | 530.0 | 506.4 | 774.0 | 460.8 | 580.3 | 606.9 | 375.2 | 618.5 | 618.5 |
| February-2020 | 518.7 | 501.2 | 726.8 | 460.8 | 580.3 | 602.4 | 375.2 | 617.1 | 617.1 |
| March-2020 | 503.2 | 502.3 | 736.5 | 460.8 | 580.3 | 603.5 | 375.2 | 617.7 | 617.7 |
| April-2020 | 504.7 | 505.1 | 759.7 | 460.8 | 580.3 | 608.4 | 375.2 | 620.1 | 620.1 |
| May-2020 | 509.3 | 509.9 | 773.4 | 460.8 | 580.3 | 611.3 | 383.9 | 621.6 | 621.6 |
| June-2020 | 526.7 | 506.8 | 736.9 | 460.8 | 584.0 | 612.2 | 383.9 | 627.6 | 627.6 |
| July-2020 | 531.2 | 509.3 | 755.2 | 460.8 | 584.0 | 613.1 | 385.2 | 655.1 | 655.1 |
| August-2020 | p 532.1 | p 510.3 | p 762.6 | p 460.8 | p 584.0 | p 616.6 | p 385.2 | p 656.4 | p 656.4 |

p: provisional

Table 8: Manufacturing Producer Price Index (Sept 2006=100) for August 2019 - August 2020
contd.

| Year / Month | Tanning of leather; manu facture of luggage, etc | Manufacture of footwear | Manufacture of wood an of articles of straw etc. | Sawmilling and planing of wood | Manufacture of products of wood, cork, straw etc. | Manufacture of paper and paper products | Manufacture of paper and paper products | Publishing, printing and reproduction of rec. media | Publishing | Printing and service activities ... |
|----------------|--|-------------------------|--|--------------------------------|---|---|---|---|------------|-------------------------------------|
| ISIC | D19 | D192 | D20 | D201 | D202 | D21 | D210 | D22 | D221 | D222 |
| weight | 0.12 | 0.12 | 9.03 | 4.94 | 4.10 | 0.62 | 0.62 | 1.14 | 0.40 | 0.74 |
| August-2019 | 533.9 | 533.9 | 355.1 | 376.2 | 301.6 | 561.7 | 561.7 | 794.0 | 665.2 | 874.5 |
| September-2019 | 533.9 | 533.9 | 355.1 | 376.2 | 301.7 | 562.0 | 562.0 | 794.0 | 665.2 | 874.5 |
| October-2019 | 533.9 | 533.9 | 355.1 | 376.2 | 301.8 | 562.3 | 562.3 | 794.0 | 665.2 | 874.5 |
| November-2019 | 544.9 | 544.9 | 357.4 | 376.2 | 309.3 | 563.0 | 563.0 | 794.0 | 665.2 | 874.5 |
| December-2019 | 544.9 | 544.9 | 357.6 | 376.2 | 309.8 | 564.5 | 564.5 | 794.0 | 665.2 | 874.5 |
| January-2020 | 544.9 | 544.9 | 357.5 | 376.2 | 309.5 | 563.5 | 563.5 | 794.0 | 665.2 | 874.5 |
| February-2020 | 546.3 | 546.3 | 357.3 | 376.2 | 308.8 | 562.0 | 562.0 | 794.0 | 665.2 | 874.5 |
| March-2020 | 546.3 | 546.3 | 357.4 | 376.2 | 309.1 | 562.4 | 562.4 | 794.0 | 665.2 | 874.5 |
| April-2020 | 546.3 | 546.3 | 357.3 | 376.2 | 309.0 | 564.0 | 564.0 | 794.0 | 665.2 | 874.5 |
| May-2020 | 550.2 | 550.2 | 365.5 | 384.0 | 317.8 | 566.4 | 566.4 | 794.0 | 665.2 | 874.5 |
| June-2020 | 550.2 | 550.2 | 365.7 | 384.0 | 318.5 | 566.7 | 566.7 | 794.0 | 665.2 | 874.5 |
| July-2020 | 550.2 | 550.2 | 365.8 | 384.0 | 318.9 | 567.0 | 567.0 | 794.0 | 665.2 | 874.5 |
| August-2020 | p 550.2 | p 550.2 | p 365.9 | p 384.0 | p 318.9 | p 567.1 | p 567.1 | p 794.0 | p 665.2 | p 874.5 |

p: provisional

Table 8: Manufacturing Producer Price Index (Sept 2006=100) for August 2019 - August 2020

contd.

| Year / Month | Manufacture of coke, refined petroleum products etc. | Manufacture of refined petroleum products | Manufacture of chemicals and chemical products | Manufacture of basic chemicals | Manufacture of other chemical products | Manufacture of man-made fibres | Manufacture of rubber and plastics products | Manufacture of rubber products | Manufacture of plastics products |
|----------------|--|---|--|--------------------------------|--|--------------------------------|---|--------------------------------|----------------------------------|
| ISIC | D23 | D232 | D24 | D241 | D242 | D243 | D25 | D251 | D252 |
| weight | 22.94 | 22.94 | 10.15 | 0.54 | 9.45 | 0.16 | 3.90 | 0.76 | 3.14 |
| August-2019 | 542.2 | 542.2 | 490.5 | 431.8 | 502.4 | 128.8 | 439.5 | 336.2 | 465.3 |
| September-2019 | 514.1 | 514.1 | 490.5 | 433.1 | 502.4 | 128.8 | 439.8 | 337.3 | 465.4 |
| October-2019 | 537.5 | 537.5 | 490.5 | 434.0 | 502.4 | 128.8 | 440.1 | 338.1 | 465.5 |
| November-2019 | 540.0 | 540.0 | 490.5 | 436.8 | 502.4 | 128.8 | 440.1 | 337.3 | 465.7 |
| December-2019 | 534.5 | 534.5 | 490.6 | 442.9 | 502.4 | 128.8 | 441.7 | 342.6 | 466.3 |
| January-2020 | 569.7 | 569.7 | 490.6 | 440.0 | 502.4 | 128.8 | 441.0 | 340.1 | 466.0 |
| February-2020 | 527.5 | 527.5 | 490.5 | 433.9 | 502.4 | 128.8 | 439.3 | 334.9 | 465.5 |
| March-2020 | 461.1 | 461.1 | 490.5 | 435.4 | 502.4 | 128.8 | 440.4 | 339.1 | 465.6 |
| April-2020 | 462.4 | 462.4 | 490.6 | 442.0 | 502.4 | 128.8 | 442.1 | 344.8 | 466.2 |
| May-2020 | 463.0 | 463.0 | 490.7 | 445.8 | 502.4 | 128.8 | 443.2 | 348.1 | 466.5 |
| June-2020 | 512.5 | 512.5 | 490.7 | 447.1 | 502.4 | 128.8 | 469.8 | 349.3 | 500.4 |
| July-2020 | 512.7 | 512.7 | 492.2 | 448.3 | 503.9 | 128.8 | 512.1 | 350.3 | 555.2 |
| August-2020 | p 512.8 | p 512.8 | p 492.2 | p 448.7 | p 503.9 | p 128.8 | p 512.2 | p 350.6 | p 555.3 |

p: provisional

Table 8: Manufacturing Producer Price Index (Sept 2006=100) for August 2019 - August 2020

contd.

| Year / Month | Manufacture of other non-metallic min. products | Manufacture of non-metallic mineral products n.e.c. | Manufacture of basic metals | Manufacture of basic iron and steel | Manufacture of basic precious and non-ferrous metals | Manufacture of fabricated metal products, ... | Manufacture of structural metal products, tanks, reservoirs ... | Manufacture of other fabricated metal products ... | Manufacture of machinery ... n.e.c. | Manufacture of special-purpose machinery |
|----------------|---|---|-----------------------------|-------------------------------------|--|---|---|--|-------------------------------------|--|
| ISIC | D26 | D269 | D27 | D271 | D272 | D28 | D281 | D289 | D29 | D292 |
| weight | 8.20 | 8.20 | 5.02 | 2.02 | 2.65 | 3.70 | 1.55 | 2.15 | 0.42 | 0.42 |
| August-2019 | 547.2 | 547.2 | 525.0 | 598.2 | 475.3 | 727.1 | 556.0 | 881.3 | 1328.8 | 1328.8 |
| September-2019 | 547.4 | 547.4 | 525.6 | 598.2 | 476.3 | 727.4 | 556.0 | 882.0 | 1328.8 | 1328.8 |
| October-2019 | 547.5 | 547.5 | 526.1 | 598.4 | 477.0 | 727.9 | 556.0 | 883.1 | 1328.8 | 1328.8 |
| November-2019 | 547.9 | 547.9 | 527.6 | 598.8 | 479.2 | 737.4 | 572.0 | 886.4 | 1328.8 | 1328.8 |
| December-2019 | 548.8 | 548.8 | 530.9 | 599.7 | 483.9 | 737.5 | 572.0 | 886.6 | 1328.8 | 1328.8 |
| January-2020 | 548.4 | 548.4 | 529.5 | 599.6 | 481.7 | 740.2 | 572.0 | 890.6 | 1328.8 | 1328.8 |
| February-2020 | 547.5 | 547.5 | 526.2 | 598.7 | 476.9 | 740.1 | 572.0 | 890.4 | 1328.8 | 1328.8 |
| March-2020 | 548.2 | 548.2 | 527.2 | 599.4 | 478.1 | 740.2 | 572.0 | 890.5 | 1328.8 | 1328.8 |
| April-2020 | 548.3 | 548.3 | 530.8 | 600.4 | 483.2 | 741.5 | 572.0 | 893.3 | 1328.8 | 1328.8 |
| May-2020 | 561.4 | 561.4 | 532.9 | 601.0 | 486.2 | 743.1 | 573.5 | 895.0 | 1328.8 | 1328.8 |
| June-2020 | 603.4 | 603.4 | 533.6 | 601.1 | 487.2 | 743.4 | 573.5 | 895.6 | 1328.8 | 1328.8 |
| July-2020 | 607.5 | 607.5 | 538.2 | 601.3 | 494.7 | 743.7 | 573.5 | 896.1 | 1328.8 | 1328.8 |
| August-2020 | p 607.6 | p 607.6 | p 547.8 | p 625.8 | p 495.0 | p 747.9 | p 573.5 | p 904.8 | p 1328.8 | p 1328.8 |

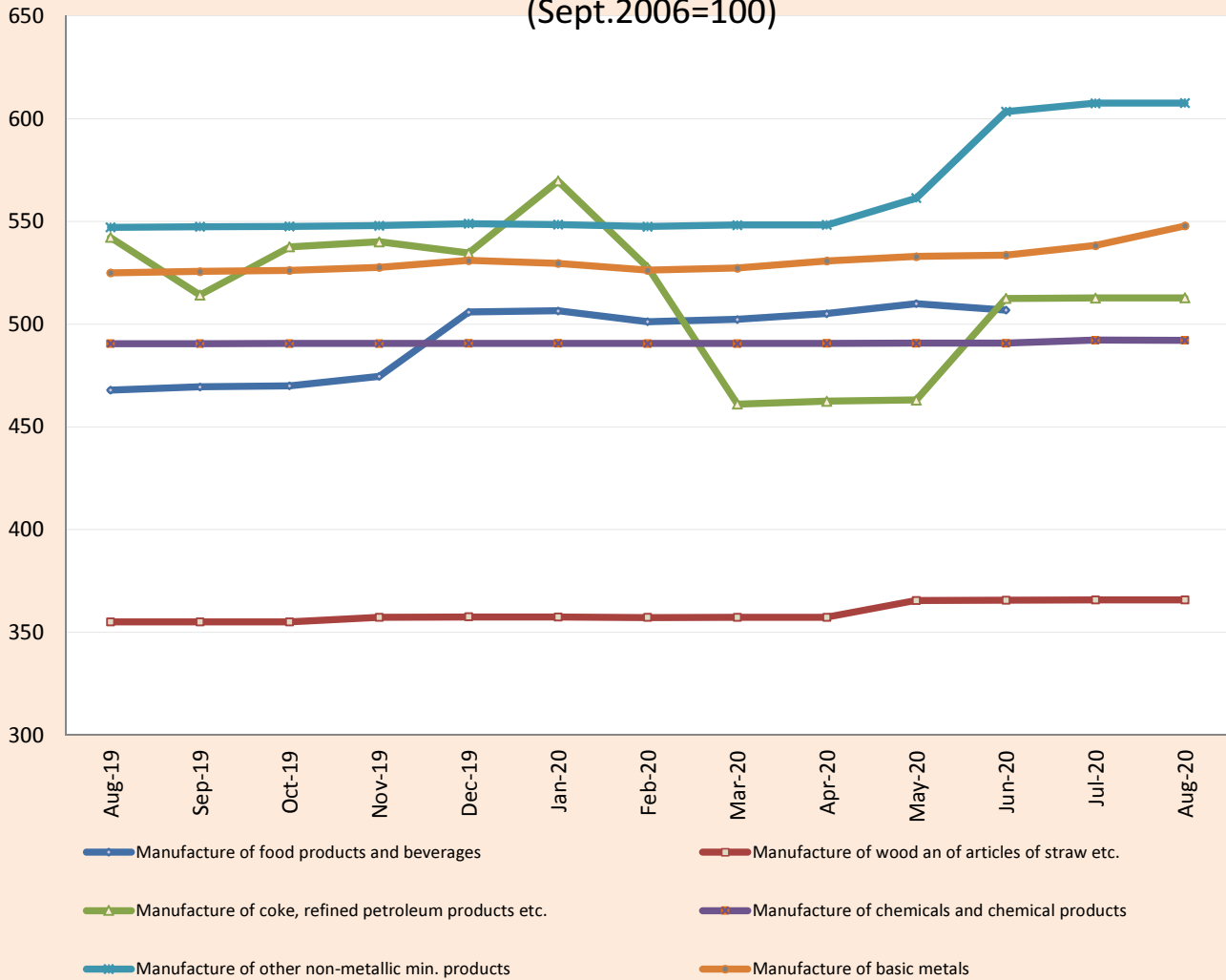
p: provisional

Table 8: Manufacturing Producer Price Index (Sept 2006=100) for August 2019 - August 2020
contd.

| Year / Month | Manufacture of electrical machinery and apparatus n.e.c. | Manufacture of insulated wire and cable | Manufacture of motor vehicles, trailers and semi-trailers | Manufacture of bodies for motor vehicles, trailers and semi-trailers | Manufacture of furniture; manufacturing n.e.c. | Manufacture of furniture | Manufacturing n.e.c. |
|----------------|--|---|---|--|--|--------------------------|----------------------|
| <i>ISIC</i> | <i>D31</i> | <i>D313</i> | <i>D34</i> | <i>D342</i> | <i>D36</i> | <i>D361</i> | <i>D369</i> |
| <i>weight</i> | 0.41 | 0.41 | 0.05 | 0.05 | 2.44 | 2.33 | 0.11 |
| August-2019 | 387.4 | 387.4 | 572.6 | 572.6 | 727.4 | 724.9 | 818.1 |
| September-2019 | 387.5 | 387.5 | 571.4 | 571.4 | 727.4 | 724.9 | 818.1 |
| October-2019 | 387.5 | 387.5 | 574.6 | 574.6 | 727.4 | 724.9 | 818.1 |
| November-2019 | 387.5 | 387.5 | 581.8 | 581.8 | 727.4 | 724.9 | 818.1 |
| December-2019 | 399.2 | 399.2 | 601.7 | 601.7 | 727.4 | 724.9 | 818.1 |
| January-2020 | 399.2 | 399.2 | 591.0 | 591.0 | 737.7 | 735.4 | 818.1 |
| February-2020 | 399.1 | 399.1 | 575.1 | 575.1 | 737.7 | 735.4 | 818.1 |
| March-2020 | 399.1 | 399.1 | 586.0 | 586.0 | 737.7 | 735.4 | 818.1 |
| April-2020 | 399.2 | 399.2 | 581.0 | 581.0 | 737.7 | 735.4 | 818.1 |
| May-2020 | 399.3 | 399.3 | 606.2 | 606.2 | 776.2 | 774.9 | 823.0 |
| June-2020 | 399.3 | 399.3 | 627.0 | 627.0 | 776.2 | 774.9 | 823.0 |
| July-2020 | 399.3 | 399.3 | 641.5 | 641.5 | 779.4 | 778.1 | 823.0 |
| August-2020 | p 399.3 | p 399.3 | p 663.7 | p 663.7 | p 778.9 | p 778.1 | p 812.5 |

p: provisional

PPI for Selected Subgroups in the Manufacturing Sector (Sept.2006=100)



Ghana Statistical Service (GSS)

Table 9: Manufacturing: Yearly Change Rates for August 2019 - August 2020 (%)

| Year / Month | Manufacturing | Manufacture of food products and beverages | Production, processing, preservation of meat, fish, fruit, vegetables, oils and fats | Manufacture of dairy products | Manufacture of grain mill products, starch products, and prepared animal feeds | Manufacture of other food products | Manufacture of beverages | Manufacture of textiles | Spinning, weaving and finishing of textiles |
|----------------|----------------------|---|--|-------------------------------|--|------------------------------------|--------------------------|--------------------------------|---|
| <i>ISIC</i> | D | D15 | D151 | D152 | D153 | D154 | D155 | D17 | D171 |
| <i>weight</i> | 100 | 25.64 | 4.60 | 4.31 | 4.66 | 4.80 | 7.27 | 4.27 | 4.28 |
| August-2019 | 5.8 | 6.7 | 7.5 | 8.5 | 8.3 | 8.5 | 2.8 | 2.9 | 2.9 |
| September-2019 | 4.1 | 6.1 | 8.6 | 8.5 | 6.4 | 4.2 | 2.8 | 3.0 | 3.0 |
| October-2019 | 3.1 | 6.1 | 8.5 | 8.5 | 6.4 | 4.4 | 2.8 | 3.0 | 3.0 |
| November-2019 | 4.5 | 7.2 | 15.6 | 8.5 | 6.8 | 4.7 | 2.8 | 3.1 | 3.1 |
| December-2019 | 8.8 | 14.7 | 27.6 | 29.0 | 6.8 | 6.5 | 2.8 | 3.2 | 3.2 |
| January-2020 | 11.2 | 13.6 | 21.3 | 29.0 | 6.8 | 4.8 | 2.8 | 3.0 | 3.0 |
| February-2020 | 6.8 | 10.9 | 11.3 | 29.0 | 0.4 | 3.8 | 2.8 | 0.2 | 0.2 |
| March-2020 | 2.1 | 8.2 | 10.9 | 18.9 | 0.4 | 3.8 | 2.8 | 0.1 | 0.1 |
| April-2020 | 0.5 | 9.5 | 19.2 | 18.9 | 0.4 | 4.7 | 2.8 | 0.6 | 0.6 |
| May-2020 | 1.1 | 9.6 | 20.5 | 18.9 | 0.4 | 5.2 | 2.3 | 0.8 | 0.8 |
| June-2020 | 3.8 | 8.5 | 13.6 | 18.9 | 1.0 | 3.1 | 2.3 | 1.6 | 1.6 |
| July-2020 | 4.4 | 9.0 | 16.5 | 18.9 | 1.0 | 3.2 | 2.7 | 6.1 | 6.1 |
| August-2020 | p 4.0 | p 9.1 | p 16.7 | p 18.9 | p 1.0 | p 3.7 | p 2.7 | p 6.3 | p 6.3 |

p: provisional

Table 9: Manufacturing: Yearly Change Rates for August 2019 - August 2020 (%)

contd.

| Year / Month | Tanning of leather; manufacture of luggage, etc | Manufacture of footwear | Manufacture of wood and of articles of straw etc. | Sawmilling and planing of wood | Manufacture of products of wood, cork, straw etc. | Manufacture of paper and paper products | Manufacture of paper and paper products | Publishing, printing and reproduction of rec. media | Publishing | Printing and service activities ... |
|----------------|---|-------------------------|---|--------------------------------|---|---|---|---|-------------|-------------------------------------|
| <i>ISIC</i> | D19 | <i>D192</i> | D20 | <i>D201</i> | <i>D202</i> | D21 | <i>D210</i> | D22 | <i>D221</i> | <i>D222</i> |
| <i>weight</i> | 0.12 | <i>0.12</i> | 9.03 | <i>4.94</i> | <i>4.10</i> | 0.62 | <i>0.62</i> | 1.14 | <i>0.40</i> | <i>0.74</i> |
| August-2019 | 0.0 | 0.0 | 0.1 | 0.0 | 0.4 | 4.4 | 4.4 | 1.7 | 0.0 | 2.7 |
| September-2019 | 0.0 | 0.0 | 0.1 | 0.0 | 0.5 | 4.3 | 4.3 | 1.7 | 0.0 | 2.7 |
| October-2019 | 0.0 | 0.0 | 0.1 | 0.0 | 0.4 | 4.3 | 4.3 | 1.7 | 0.0 | 2.7 |
| November-2019 | 2.1 | 2.1 | 0.8 | 0.0 | 3.0 | 4.4 | 4.4 | 1.7 | 0.0 | 2.7 |
| December-2019 | 2.1 | 2.1 | 0.8 | 0.0 | 3.1 | 4.7 | 4.7 | 1.7 | 0.0 | 2.7 |
| January-2020 | 2.1 | 2.1 | 0.8 | 0.0 | 2.9 | 4.3 | 4.3 | 1.7 | 0.0 | 2.7 |
| February-2020 | 2.3 | 2.3 | 0.7 | 0.0 | 2.6 | 3.8 | 3.8 | 1.7 | 0.0 | 2.7 |
| March-2020 | 2.3 | 2.3 | 0.7 | 0.0 | 2.5 | 3.5 | 3.5 | 1.7 | 0.0 | 2.7 |
| April-2020 | 2.3 | 2.3 | 0.7 | 0.0 | 2.6 | 5.7 | 5.7 | 1.5 | 0.0 | 2.4 |
| May-2020 | 3.1 | 3.1 | 3.0 | 2.1 | 5.5 | 1.5 | 1.5 | 1.5 | 0.0 | 2.4 |
| June-2020 | 3.1 | 3.1 | 3.0 | 2.1 | 5.6 | 5.9 | 5.9 | 0.0 | 0.0 | 0.0 |
| July-2020 | 3.1 | 3.1 | 3.0 | 2.1 | 5.7 | 1.0 | 1.0 | 0.0 | 0.0 | 0.0 |
| August-2020 | p 3.1 | p 3.1 | p 3.0 | p 2.1 | p 5.8 | p 0.9 | p 0.9 | p 0.0 | p 0.0 | p 0.0 |

p: provisional

Table 9: Manufacturing: Yearly Change Rates for August 2019 - August 2020 (%)

contd.

| Year / Month | Manufacture of coke, refined petroleum products etc. | Manufacture of refined petroleum products | Manufacture of chemicals and chemical products | Manufacture of basic chemicals | Manufacture of other chemical products | Manufacture of man-made fibres | Manufacture of rubber and plastic products | Manufacture of rubber products | Manufacture of plastics products |
|----------------|--|---|--|--------------------------------|--|--------------------------------|--|--------------------------------|----------------------------------|
| ISIC | D23 | D232 | D24 | D241 | D242 | D243 | D25 | D251 | D252 |
| weight | 22.94 | 22.94 | 10.15 | 0.54 | 9.45 | 0.16 | 3.90 | 0.76 | 3.14 |
| August-2019 | 3.1 | 3.1 | 5.7 | 5.9 | 5.8 | 0.0 | 3.9 | 7.3 | 3.2 |
| September-2019 | -2.7 | -2.7 | 5.7 | 5.7 | 5.8 | 0.0 | 3.7 | 6.3 | 3.2 |
| October-2019 | -5.7 | -5.7 | 5.7 | 5.5 | 5.8 | 0.0 | 3.7 | 6.1 | 3.2 |
| November-2019 | -1.7 | -1.7 | 5.7 | 6.2 | 5.8 | 0.0 | 3.7 | 5.9 | 3.3 |
| December-2019 | 8.2 | 8.2 | 5.7 | 7.4 | 5.8 | 0.0 | 1.9 | 7.2 | 0.8 |
| January-2020 | 20.6 | 20.6 | 5.7 | 5.8 | 5.8 | 0.0 | 1.5 | 5.5 | 0.7 |
| February-2020 | 6.1 | 6.1 | 5.1 | 3.0 | 5.2 | 0.0 | 0.8 | 2.4 | 0.4 |
| March-2020 | -9.6 | -9.6 | 4.5 | 1.7 | 4.6 | 0.0 | 0.4 | 1.9 | 0.1 |
| April-2020 | -15.3 | -15.3 | 1.2 | 4.2 | 1.2 | 0.0 | 1.1 | 4.6 | 0.3 |
| May-2020 | -15.4 | -15.4 | 1.2 | 4.9 | 1.2 | 0.0 | 1.3 | 5.4 | 0.4 |
| June-2020 | -4.5 | -4.5 | 1.2 | 3.8 | 1.2 | 0.0 | 7.0 | 4.2 | 7.6 |
| July-2020 | -4.0 | -4.0 | 0.3 | 4.0 | 0.3 | 0.0 | 16.6 | 4.4 | 19.3 |
| August-2020 | -p 5.4 | -p 5.4 | p 0.3 | p 3.9 | p 0.3 | p 0.0 | p 16.5 | p 4.3 | p 19.3 |

p: provisional

Table 9: Manufacturing: Yearly Change Rates for August 2019 - August 2020 (%)

contd.

| Year / Month | Manufacture of other non-metallic min. products | Manufacture of non-metallic mineral products n.e.c. | Manufacture of basic metals | Manufacture of basic iron and steel | Manufacture of basic precious and non-ferrous metals | Manufacture of fabricated metal products, ... | Manufacture of structural metal products, tanks, reservoirs ... | Manufacture of other fabricated metal products ... | Manufacture of machinery ... n.e.c. | Manufacture of special-purpose machinery |
|----------------|---|---|-----------------------------|-------------------------------------|--|---|---|--|-------------------------------------|--|
| <i>ISIC</i> | D26 | D269 | D27 | D271 | D272 | D28 | D281 | D289 | D29 | D292 |
| <i>weight</i> | 8.20 | 8.20 | 5.02 | 2.02 | 2.65 | 3.70 | 1.55 | 2.15 | 0.42 | 0.42 |
| August-2019 | 12.4 | 12.4 | 7.3 | 1.5 | 12.0 | 9.2 | 0.4 | 15.9 | 24.7 | 24.7 |
| September-2019 | 12.1 | 12.1 | 7.6 | 2.2 | 11.8 | 8.5 | 0.4 | 14.6 | 24.7 | 24.7 |
| October-2019 | 10.0 | 10.0 | 7.5 | 2.2 | 11.7 | 8.6 | 0.4 | 14.8 | 24.7 | 24.7 |
| November-2019 | 10.1 | 10.1 | 7.8 | 2.3 | 12.2 | 10.0 | 3.3 | 15.1 | 24.7 | 24.7 |
| December-2019 | 10.3 | 10.3 | 8.3 | 2.4 | 13.1 | 9.3 | 2.9 | 14.2 | 24.7 | 24.7 |
| January-2020 | 10.1 | 10.1 | 7.6 | 2.3 | 11.9 | 9.7 | 2.9 | 14.7 | 24.7 | 24.7 |
| February-2020 | 9.9 | 9.9 | 6.4 | 2.0 | 9.8 | 9.2 | 2.9 | 13.9 | 24.7 | 24.7 |
| March-2020 | 9.9 | 9.9 | 5.8 | 2.0 | 8.8 | 9.2 | 2.9 | 13.9 | 24.7 | 24.7 |
| April-2020 | 9.9 | 9.9 | 2.5 | 2.2 | 2.7 | 9.4 | 2.9 | 14.3 | 24.7 | 24.7 |
| May-2020 | 12.7 | 12.7 | 3.0 | 2.3 | 3.5 | 9.6 | 3.1 | 14.5 | 24.7 | 24.7 |
| June-2020 | 12.1 | 12.1 | 2.3 | 2.2 | 2.5 | 7.3 | 3.1 | 10.3 | 0.0 | 0.0 |
| July-2020 | 11.0 | 11.0 | 2.6 | 0.5 | 4.2 | 6.6 | 3.1 | 9.1 | 0.0 | 0.0 |
| August-2020 | p 11.0 | p 11.0 | p 4.3 | p 4.6 | p 4.1 | p 2.9 | p 3.1 | p 2.7 | p 0.0 | p 0.0 |

p: provisional

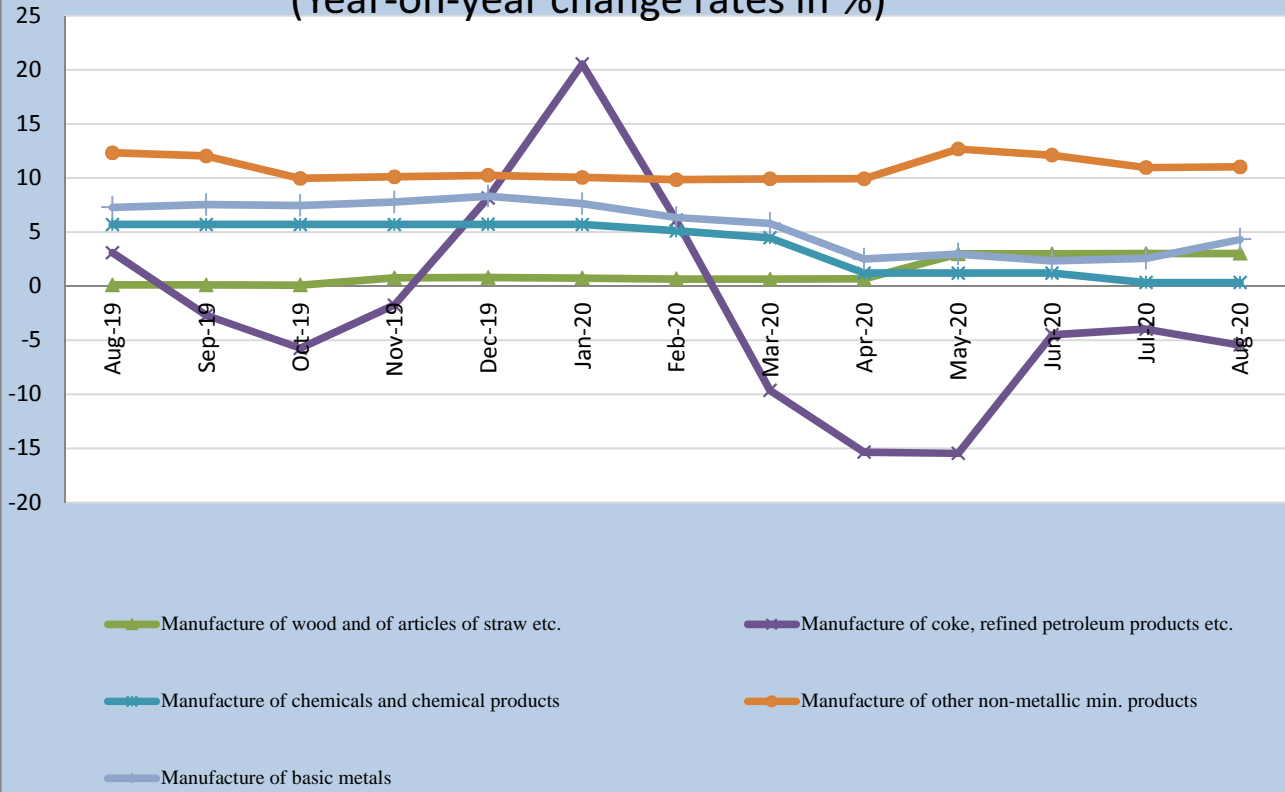
Table 9: Manufacturing: Yearly Change Rates for August 2019 - August 2020 (%)

contd.

| Year / Month | Manufacture of electrical machinery and apparatus n.e.c. | Manufacture of insulated wire and cable | Manufacture of motor vehicles, trailers and semi-trailers | Manufacture of bodies for motor vehicles, trailers and semi-trailers | Manufacture of furniture; manufacturing n.e.c. | Manufacture of furniture | Manufacturing n.e.c. |
|----------------|--|---|---|--|--|--------------------------|----------------------|
| <i>ISIC</i> | D31 | <i>D313</i> | D34 | <i>D342</i> | D36 | <i>D361</i> | <i>D369</i> |
| <i>weight</i> | 0.41 | <i>0.41</i> | 0.05 | <i>0.05</i> | 2.44 | <i>2.33</i> | <i>0.11</i> |
| August-2019 | 0.1 | 0.1 | 7.7 | 7.7 | 8.4 | 8.6 | 1.7 |
| September-2019 | 0.1 | 0.1 | 7.9 | 7.9 | 5.7 | 5.8 | 1.7 |
| October-2019 | 0.1 | 0.1 | 6.8 | 6.8 | 5.7 | 5.8 | 1.7 |
| November-2019 | 0.1 | 0.1 | 9.3 | 9.3 | 5.7 | 5.8 | 1.7 |
| December-2019 | 3.1 | 3.1 | 12.3 | 12.3 | 5.7 | 5.8 | 0.4 |
| January-2020 | 3.1 | 3.1 | 8.2 | 8.2 | 5.5 | 5.7 | 0.0 |
| February-2020 | 3.0 | 3.0 | 3.4 | 3.4 | 1.8 | 1.8 | 0.0 |
| March-2020 | 3.0 | 3.0 | 2.4 | 2.4 | 1.5 | 1.6 | 0.0 |
| April-2020 | 3.1 | 3.1 | 4.0 | 4.0 | 1.4 | 1.5 | 0.0 |
| May-2020 | 3.1 | 3.1 | 8.5 | 8.5 | 6.7 | 6.9 | 0.6 |
| June-2020 | 3.1 | 3.1 | 8.4 | 8.4 | 6.7 | 6.9 | 0.6 |
| July-2020 | 3.1 | 3.1 | 11.4 | 11.4 | 7.2 | 7.4 | 0.6 |
| August-2020 | p 3.1 | p 3.1 | p 15.9 | p 15.9 | p 7.1 | p 7.3 | -p 0.7 |

p: provisional

PPI Inflation for selected subgroups in the Manufacturing Sector (Year-on-year change rates in %)



Ghana Statistical Service (GSS)

Table 10: Manufacturing: Monthly Change Rates for August 2019 - August 2020 (%)

| Year / Month | Manufacturing | Manufacture of food products and beverages | Production, processing, preservation of meat, fish, fruit, vegetables, oils and fats | Manufacture of dairy products | Manufacture of grain mill products, starch products, and prepared animal feeds | Manufacture of other food products | Manufacture of beverages | Manufacture of textiles | Spinning, weaving and finishing of textiles |
|----------------|---------------|--|--|-------------------------------|--|------------------------------------|--------------------------|-------------------------|---|
| ISIC | D | D15 | D151 | D152 | D153 | D154 | D155 | D17 | D171 |
| weight | 100 | 25.64 | 4.60 | 4.31 | 4.66 | 4.80 | 7.27 | 4.27 | 4.28 |
| August-2019 | 0.6 | 0.1 | 0.8 | 0.0 | 0.0 | 0.1 | 0.0 | 0.0 | 0.0 |
| September-2019 | -1.1 | 0.3 | 2.1 | 0.0 | 0.0 | 0.2 | 0.0 | 0.0 | 0.0 |
| October-2019 | 1.1 | 0.1 | 0.6 | 0.0 | 0.0 | 0.2 | 0.0 | 0.0 | 0.0 |
| November-2019 | 0.5 | 1.0 | 5.9 | 0.0 | 0.4 | 0.3 | 0.0 | 0.1 | 0.1 |
| December-2019 | 1.6 | 6.6 | 7.8 | 18.9 | 0.0 | 1.7 | 0.0 | 0.2 | 0.2 |
| January-2020 | 1.5 | 0.1 | 1.0 | 0.0 | 0.0 | -0.4 | 0.0 | -0.1 | -0.1 |
| February-2020 | -2.1 | -1.0 | -6.1 | 0.0 | 0.0 | -0.8 | 0.0 | -0.2 | -0.2 |
| March-2020 | -3.0 | 0.2 | 1.3 | 0.0 | 0.0 | 0.2 | 0.0 | 0.1 | 0.1 |
| April-2020 | 0.3 | 0.6 | 3.1 | 0.0 | 0.0 | 0.8 | 0.0 | 0.4 | 0.4 |
| May-2020 | 0.9 | 1.0 | 1.8 | 0.0 | 0.0 | 0.5 | 2.3 | 0.2 | 0.2 |
| June-2020 | 3.4 | -0.6 | -4.7 | 0.0 | 0.6 | 0.2 | 0.0 | 1.0 | 1.0 |
| July-2020 | 0.8 | 0.5 | 2.5 | 0.0 | 0.0 | 0.1 | 0.3 | 4.4 | 4.4 |
| August-2020 | p 0.2 | p 0.2 | p 1.0 | p 0.0 | p 0.0 | p 0.6 | p 0.0 | p 0.2 | p 0.2 |

p: provisional

Table 10: Manufacturing: Monthly Change Rates for August 2019 - August 2020 (%)

contd.

| Year / Month | Tanning of leather; manu facture of luggage, etc | Manufacture of footwear | Manufacture of wood an of articles of straw etc. | Sawmilling and planing of wood | Manufacture of products of wood, cork, straw etc. | Manufacture of paper and paper products | Manufacture of paper and paper products | Publishing, printing and reproduction of rec. media | Publishing | Printing and service activities ... |
|----------------|--|-------------------------|--|--------------------------------|---|---|---|---|-------------|-------------------------------------|
| <i>ISIC</i> | D19 | <i>D192</i> | D20 | <i>D201</i> | <i>D202</i> | D21 | <i>D210</i> | D22 | <i>D221</i> | <i>D222</i> |
| <i>weight</i> | 0.12 | <i>0.12</i> | 9.03 | <i>4.94</i> | <i>4.10</i> | 0.62 | <i>0.62</i> | 1.14 | <i>0.40</i> | <i>0.74</i> |
| August-2019 | 0.0 | 0.0 | 0.0 | 0.0 | 0.0 | 0.0 | 0.0 | 0.0 | 0.0 | 0.0 |
| September-2019 | 0.0 | 0.0 | 0.0 | 0.0 | 0.0 | 0.1 | 0.1 | 0.0 | 0.0 | 0.0 |
| October-2019 | 0.0 | 0.0 | 0.0 | 0.0 | 0.0 | 0.0 | 0.0 | 0.0 | 0.0 | 0.0 |
| November-2019 | 2.1 | 2.1 | 0.6 | 0.0 | 2.5 | 0.1 | 0.1 | 0.0 | 0.0 | 0.0 |
| December-2019 | 0.0 | 0.0 | 0.0 | 0.0 | 0.2 | 0.3 | 0.3 | 0.0 | 0.0 | 0.0 |
| January-2020 | 0.0 | 0.0 | 0.0 | 0.0 | -0.1 | -0.2 | -0.2 | 0.0 | 0.0 | 0.0 |
| February-2020 | 0.3 | 0.3 | -0.1 | 0.0 | -0.2 | -0.3 | -0.3 | 0.0 | 0.0 | 0.0 |
| March-2020 | 0.0 | 0.0 | 0.0 | 0.0 | 0.1 | 0.1 | 0.1 | 0.0 | 0.0 | 0.0 |
| April-2020 | 0.0 | 0.0 | 0.0 | 0.0 | 0.0 | 0.3 | 0.3 | 0.0 | 0.0 | 0.0 |
| May-2020 | 0.7 | 0.7 | 2.3 | 2.1 | 2.9 | 0.4 | 0.4 | 0.0 | 0.0 | 0.0 |
| June-2020 | 0.0 | 0.0 | 0.1 | 0.0 | 0.2 | 0.1 | 0.1 | 0.0 | 0.0 | 0.0 |
| July-2020 | 0.0 | 0.0 | 0.0 | 0.0 | 0.1 | 0.1 | 0.1 | 0.0 | 0.0 | 0.0 |
| August-2020 | p 0.0 | p 0.0 | p 0.0 | p 0.0 | p 0.0 | p 0.0 | p 0.0 | p 0.0 | p 0.0 | p 0.0 |

p: provisional

Table 10: Manufacturing: Monthly Change Rates for August 2019 - August 2020 (%)

contd.

| Year / Month | Manufacture of coke, refined petroleum products etc. | Manufacture of refined petroleum products | Manufacture of chemicals and chemical products | Manufacture of basic chemicals | Manufacture of other chemical products | Manufacture of man-made fibres | Manufacture of rubber and plastics products | Manufacture of rubber products | Manufacture of plastics products |
|----------------|--|---|--|--------------------------------|--|--------------------------------|---|--------------------------------|----------------------------------|
| <i>ISIC</i> | D23 | <i>D232</i> | D24 | <i>D241</i> | <i>D242</i> | <i>D243</i> | D25 | <i>D251</i> | <i>D252</i> |
| <i>weight</i> | 22.94 | 22.94 | 10.15 | 0.54 | 9.45 | 0.16 | 3.90 | 0.76 | 3.14 |
| August-2019 | 1.6 | 1.6 | 0.0 | 0.1 | 0.0 | 0.0 | 0.0 | 0.2 | 0.0 |
| September-2019 | -5.2 | -5.2 | 0.0 | 0.3 | 0.0 | 0.0 | 0.1 | 0.3 | 0.0 |
| October-2019 | 4.6 | 4.6 | 0.0 | 0.2 | 0.0 | 0.0 | 0.1 | 0.2 | 0.0 |
| November-2019 | 0.5 | 0.5 | 0.0 | 0.6 | 0.0 | 0.0 | 0.0 | -0.2 | 0.1 |
| December-2019 | -1.0 | -1.0 | 0.0 | 1.4 | 0.0 | 0.0 | 0.4 | 1.6 | 0.1 |
| January-2020 | 6.6 | 6.6 | 0.0 | -0.7 | 0.0 | 0.0 | -0.2 | -0.7 | -0.1 |
| February-2020 | -7.4 | -7.4 | 0.0 | -1.4 | 0.0 | 0.0 | -0.4 | -1.5 | -0.1 |
| March-2020 | -12.6 | -12.6 | 0.0 | 0.4 | 0.0 | 0.0 | 0.2 | 1.3 | 0.0 |
| April-2020 | 0.3 | 0.3 | 0.0 | 1.5 | 0.0 | 0.0 | 0.4 | 1.7 | 0.1 |
| May-2020 | 0.1 | 0.1 | 0.0 | 0.9 | 0.0 | 0.0 | 0.2 | 1.0 | 0.1 |
| June-2020 | 10.7 | 10.7 | 0.0 | 0.3 | 0.0 | 0.0 | 6.0 | 0.3 | 7.3 |
| July-2020 | 0.0 | 0.0 | 0.3 | 0.3 | 0.3 | 0.0 | 9.0 | 0.3 | 11.0 |
| August-2020 | p 0.0 | p 0.0 | p 0.0 | p 0.1 | p 0.0 | p 0.0 | p 0.0 | p 0.1 | p 0.0 |

p: provisional

Table 10: Manufacturing: Monthly Change Rates for August 2019 - August 2020 (%)

contd.

| Year / Month | Manufacture of other non-metallic min. products | Manufacture of non-metallic mineral products n.e.c. | Manufacture of basic metals | Manufacture of basic iron and steel | Manufacture of basic precious and non-ferrous metals | Manufacture of fabricated metal products, ... | Manufacture of structural metal products, tanks, reservoirs ... | Manufacture of other fabricated metal products ... | Manufacture of machinery ... n.e.c. | Manufacture of special-purpose machinery |
|----------------|---|---|-----------------------------|-------------------------------------|--|---|---|--|-------------------------------------|--|
| <i>ISIC</i> | D26 | <i>D269</i> | D27 | <i>D271</i> | <i>D272</i> | D28 | <i>D281</i> | <i>D289</i> | D29 | <i>D292</i> |
| <i>weight</i> | 8.20 | 8.20 | 5.02 | 2.02 | 2.65 | 3.70 | 1.55 | 2.15 | 0.42 | 0.42 |
| August-2019 | 0.0 | 0.0 | 0.1 | 0.0 | 0.1 | 4.3 | 0.0 | 7.3 | 0.0 | 0.0 |
| September-2019 | 0.0 | 0.0 | 0.1 | 0.0 | 0.2 | 0.0 | 0.0 | 0.1 | 0.0 | 0.0 |
| October-2019 | 0.0 | 0.0 | 0.1 | 0.0 | 0.1 | 0.1 | 0.0 | 0.1 | 0.0 | 0.0 |
| November-2019 | 0.1 | 0.1 | 0.3 | 0.1 | 0.5 | 1.3 | 2.9 | 0.4 | 0.0 | 0.0 |
| December-2019 | 0.2 | 0.2 | 0.6 | 0.1 | 1.0 | 0.0 | 0.0 | 0.0 | 0.0 | 0.0 |
| January-2020 | -0.1 | -0.1 | -0.3 | 0.0 | -0.5 | 0.4 | 0.0 | 0.5 | 0.0 | 0.0 |
| February-2020 | -0.2 | -0.2 | -0.6 | -0.1 | -1.0 | 0.0 | 0.0 | 0.0 | 0.0 | 0.0 |
| March-2020 | 0.1 | 0.1 | 0.2 | 0.1 | 0.3 | 0.0 | 0.0 | 0.0 | 0.0 | 0.0 |
| April-2020 | 0.0 | 0.0 | 0.7 | 0.2 | 1.1 | 0.2 | 0.0 | 0.3 | 0.0 | 0.0 |
| May-2020 | 2.4 | 2.4 | 0.4 | 0.1 | 0.6 | 0.2 | 0.3 | 0.2 | 0.0 | 0.0 |
| June-2020 | 7.5 | 7.5 | 0.1 | 0.0 | 0.2 | 0.0 | 0.0 | 0.1 | 0.0 | 0.0 |
| July-2020 | 0.7 | 0.7 | 0.9 | 0.0 | 1.5 | 0.0 | 0.0 | 0.1 | 0.0 | 0.0 |
| August-2020 | p 0.0 | p 0.0 | p 1.8 | p 4.1 | p 0.1 | p 0.6 | p 0.0 | p 1.0 | p 0.0 | p 0.0 |

p: provisional

Table 10: Manufacturing: Monthly Change Rates for August 2019 - August 2020 (%)

contd.

| Year / Month | Manufacture of electrical machinery and apparatus n.e.c. | Manufacture of insulated wire and cable | Manufacture of motor vehicles, trailers and semi-trailers | Manufacture of bodies for motor vehicles, trailers and semi-trailers | Manufacture of furniture; manufacturing n.e.c. | Manufacture of furniture | Manufacturing n.e.c. |
|----------------|--|---|---|--|--|--------------------------|----------------------|
| <i>ISIC</i> | D31 | <i>D313</i> | D34 | <i>D342</i> | D36 | <i>D361</i> | <i>D369</i> |
| <i>weight</i> | 0.41 | <i>0.41</i> | 0.05 | <i>0.05</i> | 2.44 | <i>2.33</i> | <i>0.11</i> |
| August-2019 | 0.0 | 0.0 | -0.6 | -0.6 | 0.1 | 0.1 | 0.0 |
| September-2019 | 0.0 | 0.0 | -0.2 | -0.2 | 0.0 | 0.0 | 0.0 |
| October-2019 | 0.0 | 0.0 | 0.6 | 0.6 | 0.0 | 0.0 | 0.0 |
| November-2019 | 0.0 | 0.0 | 1.2 | 1.2 | 0.0 | 0.0 | 0.0 |
| December-2019 | 3.0 | 3.0 | 3.4 | 3.4 | 0.0 | 0.0 | 0.0 |
| January-2020 | 0.0 | 0.0 | -1.8 | -1.8 | 1.4 | 1.5 | 0.0 |
| February-2020 | 0.0 | 0.0 | -2.7 | -2.7 | 0.0 | 0.0 | 0.0 |
| March-2020 | 0.0 | 0.0 | 1.9 | 1.9 | 0.0 | 0.0 | 0.0 |
| April-2020 | 0.0 | 0.0 | -0.9 | -0.9 | 0.0 | 0.0 | 0.0 |
| May-2020 | 0.0 | 0.0 | 4.3 | 4.3 | 5.2 | 5.4 | 0.6 |
| June-2020 | 0.0 | 0.0 | 3.4 | 3.4 | 0.0 | 0.0 | 0.0 |
| July-2020 | 0.0 | 0.0 | 2.3 | 2.3 | 0.4 | 0.4 | 0.0 |
| August-2020 | p 0.0 | p 0.0 | p 3.5 | p 3.5 | p -0.1 | p 0.0 | p -1.3 |

p: provisional

Table 11: Utilities: Producer Price Index (Sept 2006=100) for August 2019 - August 2020

| Year / Month | Electricity and water supply (Utilities) | Electricity supply | Production, transmission and distribution of electricity | Water supply | Collection, purification and distribution of water |
|----------------|--|--------------------|--|--------------|--|
| <i>ISIC</i> | <i>E</i> | <i>E40</i> | <i>E401</i> | <i>E41</i> | <i>E410</i> |
| <i>weight</i> | 100.00 | 93.25 | 93.25 | 6.75 | 6.75 |
| August-2019 | 849.7 | 846.2 | 846.2 | 901.2 | 901.2 |
| September-2019 | 850.0 | 846.5 | 846.5 | 901.2 | 901.2 |
| October-2019 | 896.0 | 894.2 | 894.2 | 921.2 | 921.2 |
| November-2019 | 896.5 | 894.8 | 894.8 | 921.2 | 921.2 |
| December-2019 | 897.7 | 896.1 | 896.1 | 921.2 | 921.2 |
| January-2020 | 897.2 | 895.5 | 895.5 | 921.2 | 921.2 |
| February-2020 | 895.9 | 894.2 | 894.2 | 921.2 | 921.2 |
| March-2020 | 896.2 | 894.5 | 894.5 | 921.2 | 921.2 |
| April-2020 | 897.6 | 895.9 | 895.9 | 921.2 | 921.2 |
| May-2020 | 898.3 | 896.7 | 896.7 | 921.2 | 921.2 |
| June-2020 | 898.6 | 897.0 | 897.0 | 921.2 | 921.2 |
| July-2020 | 898.8 | 897.3 | 897.3 | 921.2 | 921.2 |
| August-2020 | p 898.9 | p 897.3 | p 897.3 | p 921.2 | p 921.2 |

p: provisional

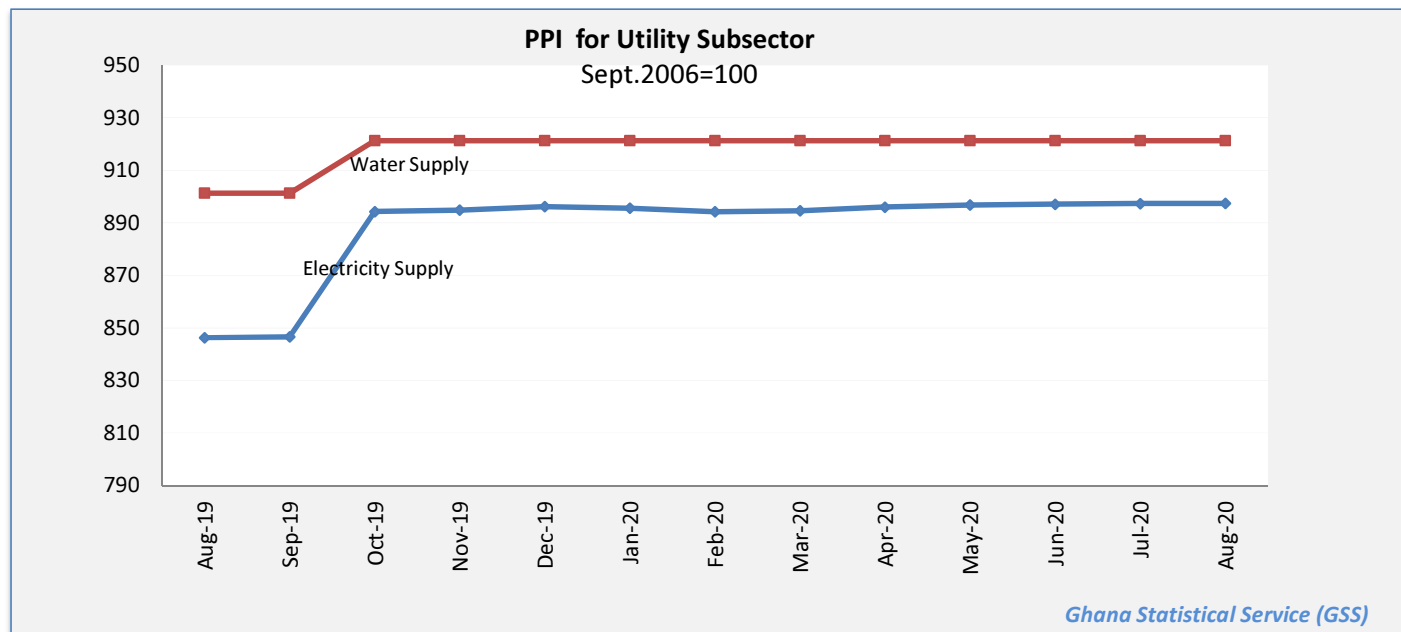


Table 12: Utilities: Yearly Change Rates for August 2019 - August 2020 (%)

| Year / Month | Electricity and water supply (Utilities) | Electricity supply | Production, transmission and distribution of electricity | Water supply | Collection, purification and distribution of water |
|----------------|--|--------------------|--|--------------|--|
| ISIC | E | E40 | E401 | E41 | E410 |
| weight | 100.00 | 93.25 | 93.25 | 6.75 | 6.75 |
| August-2019 | 6.8 | 6.8 | 6.8 | 8.0 | 8.0 |
| September-2019 | 6.8 | 6.7 | 6.7 | 8.0 | 8.0 |
| October-2019 | 12.6 | 12.7 | 12.7 | 10.4 | 10.4 |
| November-2019 | 12.6 | 12.8 | 12.8 | 10.4 | 10.4 |
| December-2019 | 12.7 | 12.9 | 12.9 | 10.4 | 10.4 |
| January-2020 | 12.6 | 12.7 | 12.7 | 10.4 | 10.4 |
| February-2020 | 12.3 | 12.4 | 12.4 | 10.4 | 10.4 |
| March-2020 | 12.2 | 12.3 | 12.3 | 10.4 | 10.4 |
| April-2020 | 12.1 | 12.2 | 12.2 | 10.4 | 10.4 |
| May-2020 | 12.1 | 12.2 | 12.2 | 10.4 | 10.4 |
| June-2020 | 12.0 | 12.1 | 12.1 | 10.4 | 10.4 |
| July-2020 | 5.8 | 6.0 | 6.0 | 2.2 | 2.2 |
| August-2020 | p 5.8 | p 6.0 | p 6.0 | p 2.2 | p 2.2 |

p: provisional

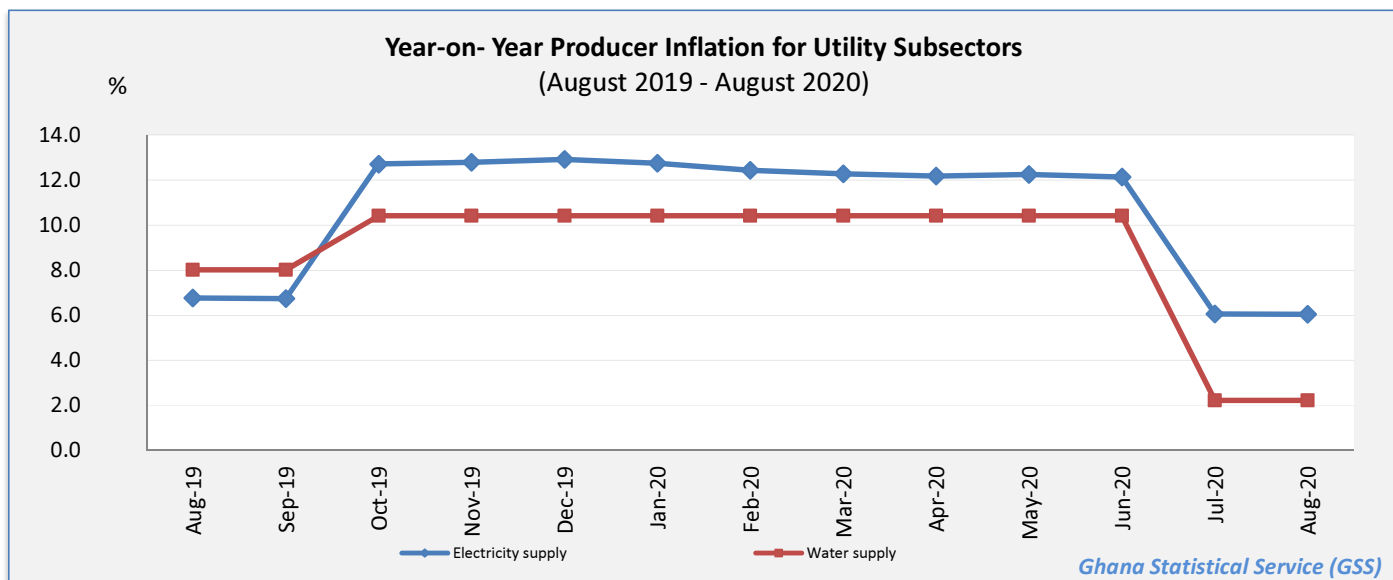


Table 13: Utilities: Monthly Change Rates for August 2019 - August 2020 (%)

| Year / Month | Electricity and water supply (Utilities) | Electricity supply | Production, transmission and distribution of electricity | Water supply | Collection, purification and distribution of water |
|----------------|--|--------------------|--|--------------|--|
| <i>ISIC</i> | <i>E</i> | <i>E40</i> | <i>E401</i> | <i>E41</i> | <i>E410</i> |
| <i>weight</i> | 100.00 | 93.25 | 93.25 | 6.75 | 6.75 |
| August-2019 | 0.0 | 0.0 | 0.0 | 0.0 | 0.0 |
| September-2019 | 0.0 | 0.0 | 0.0 | 0.0 | 0.0 |
| October-2019 | 5.4 | 5.6 | 5.6 | 2.2 | 2.2 |
| November-2019 | 0.1 | 0.1 | 0.1 | 0.0 | 0.0 |
| December-2019 | 0.1 | 0.1 | 0.1 | 0.0 | 0.0 |
| January-2020 | -0.1 | -0.1 | -0.1 | 0.0 | 0.0 |
| February-2020 | -0.1 | -0.1 | -0.1 | 0.0 | 0.0 |
| March-2020 | 0.0 | 0.0 | 0.0 | 0.0 | 0.0 |
| April-2020 | 0.1 | 0.2 | 0.2 | 0.0 | 0.0 |
| May-2020 | 0.1 | 0.1 | 0.1 | 0.0 | 0.0 |
| June-2020 | 0.0 | 0.0 | 0.0 | 0.0 | 0.0 |
| July-2020 | 0.0 | 0.0 | 0.0 | 0.0 | 0.0 |
| August-2020 | p 0.0 | p 0.0 | p 0.0 | p 0.0 | p 0.0 |

p: provisional

